

## Barrier-free Facilities in Rumsey Street Multi-Storey Car Park Building

Currently, barrier-free facilities provided in Rumsey Street Multi-Storey Car Park Building include:

- Accessible Entrance and Exit on G/F (Photo 1)
- Braille and Tactile Floor Plan on G/F (Photo 2a) and 10/F (Photo 2b)
- Accessible Toilets on 10/F (Photo 3)
- Accessible Lifts (Photo 4)
- Braille and Tactile Markings on Lift Control Buttons (Photo 5)
- Tactile Guide Path (Photo 6)
- Visual Fire Alarms (Photo 7)
- Accessible Carpark Space (Photo 8)



Photo 1



Photo 2a



Photo 2b

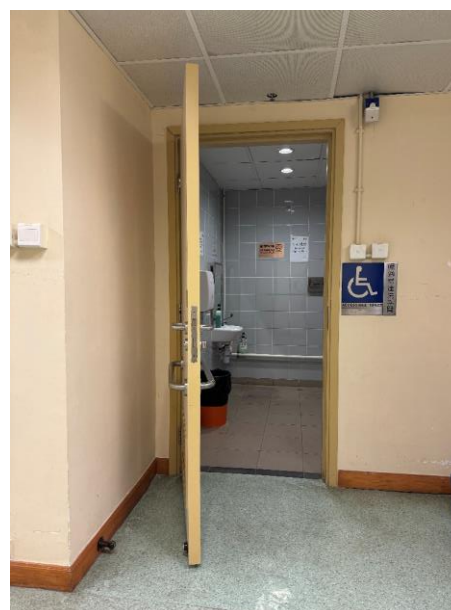


Photo 3



Photo 4



Photo 5



Photo 6



Photo 7

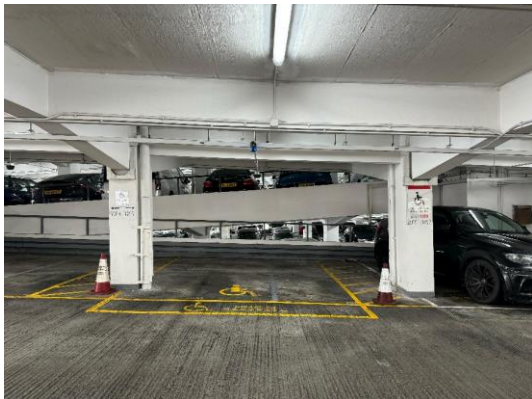


Photo 8